

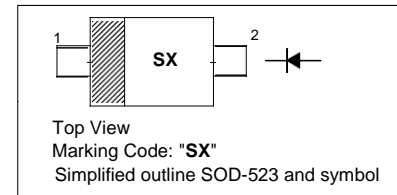
## SMALL SIGNAL SCHOTTKY DIODE

### Features

- Low forward voltage drop

### PINNING

PIN	DESCRIPTION
1	Cathode
2	Anode



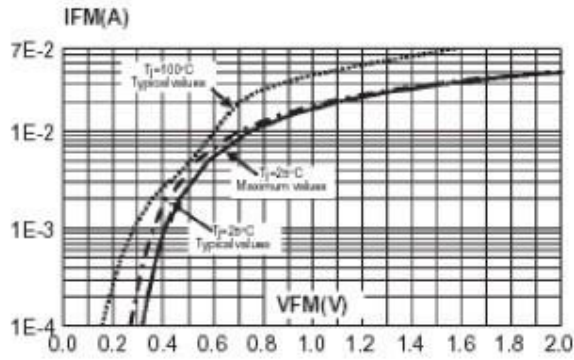
### Absolute Maximum Ratings ( $T_a = 25\text{ °C}$ )

Parameter	Symbol	Value	Unit
Repetitive Peak Reverse Voltage	$V_{RRM}$	70	V
Continuous Forward Current	$I_F$	70	mA
Surge Non-Repetitive Forward Current ( $t_p = 10\text{ ms}$ )	$I_{FSM}$	1	A
Total Power Dissipation	$P_{tot}$	230	mW
Thermal Resistance Junction to Ambient <sup>1)</sup>	$R_{thJA}$	550	°C/W
Junction Temperature	$T_J$	150	°C
Storage Temperature Range	$T_{stg}$	- 65 to + 150	°C

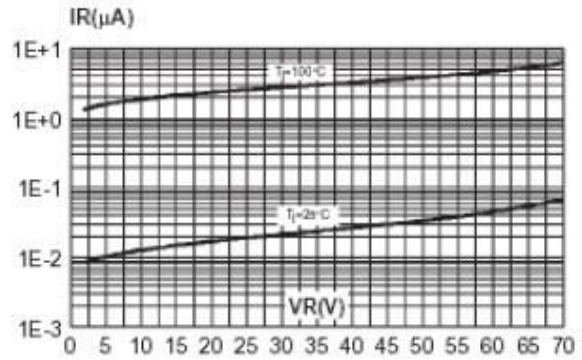
<sup>1)</sup> Mounted on epoxy board, with recommended pad layout.

### Characteristics at $T_a = 25\text{ °C}$

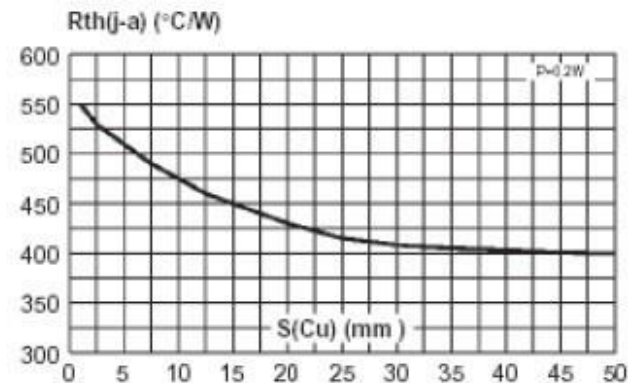
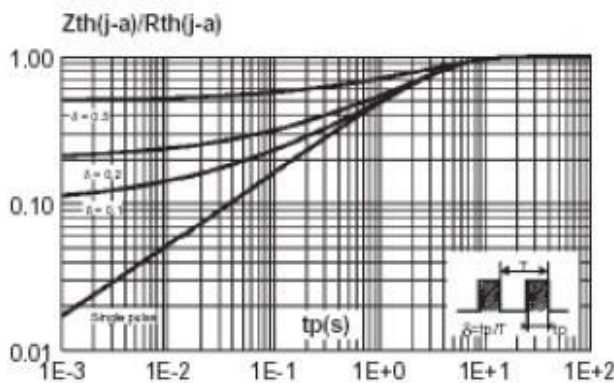
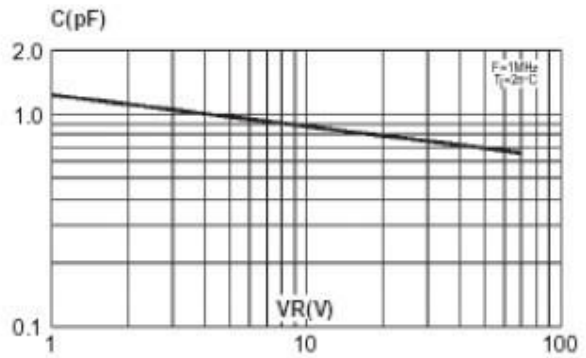
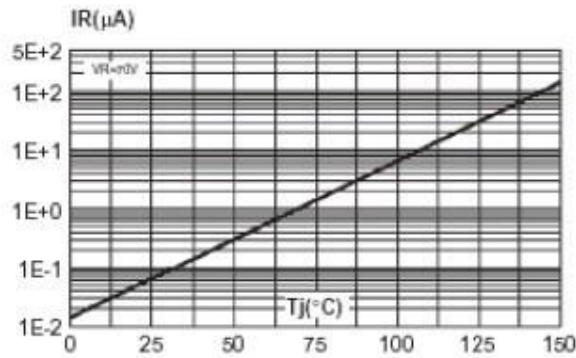
Parameter	Symbol	Min.	Max.	Unit
Reverse Breakdown Voltage at $I_R = 10\text{ }\mu\text{A}$	$V_{BR}$	70	-	V
Forward Voltage at $I_F = 1\text{ mA}$	$V_F$	-	410	mV
Reverse Current at $V_R = 50\text{ V}$	$I_R$	-	100	nA
Diode Capacitance at $V_R = 0\text{ V}$ , $f = 1\text{ MHz}$	$C_{tot}$	-	2	pF



Reverse leakage current versus junction temperature (typical values).



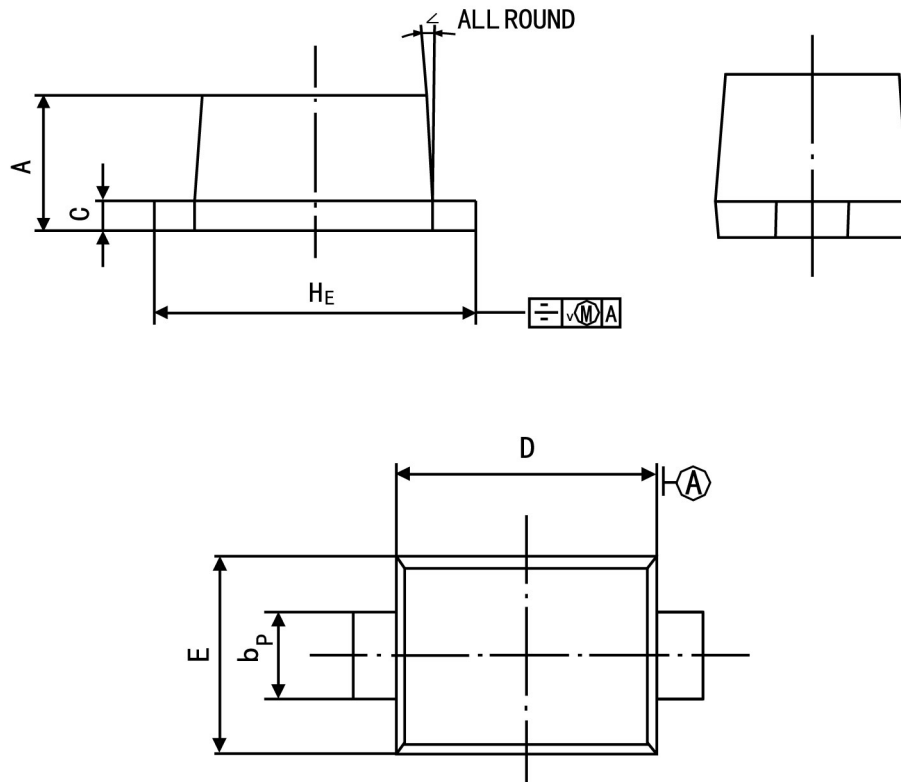
Junction capacitance versus reverse voltage applied (typical values).



## PACKAGE OUTLINE

Plastic surface mounted package; 2 leads

SOD-523



Symbol	Dimension in Millimeters	
	Min	Max
A	0.60	0.70
bp	0.30	0.40
C	0.100	0.14
D	1.15	1.25
E	0.75	0.85
HE	1.50	1.70
V	—	0.10
∠	—	5°